

Hastings St between Holland Ave and Santa Anita Ave

November 23, 2020 To November 27, 2020



The data presented here is for information purposes only and should not be considered authoritative for construction, geotechnical, engineering, navigational, legal, or other site-specific uses. The information shared is owned by the Transportation Division of the Engineering Department at the District of Saanich. Accuracy is not guaranteed.

Start Date: 23-Nov-20
 Start Time: 21:02
 Station ID: C0032-01

Location 1: Hastings St between Holland Ave and Santa Anita Ave

Note:

DATE:	November 23, 2020		November 24, 2020		November 25, 2020		November 26, 2020		November 27, 2020		WK AVG		WK AVG	HOURLY
	MON		TUE		WED		THURS		FRI		EB	WB	CH 1+2	%
Time:	EB	WB	EB	WB	EB	WB	EB	WB	EB	WB	EB	WB		
12-1 AM	0	0	2	1	5	3	4	6			3	3	5	0.3%
1-2 AM	0	0	2	2	4	2	3	1			2	1	4	0.2%
2-3 AM	0	0	3	0	3	0	3	0			2	0	2	0.1%
3-4 AM	0	0	0	2	1	1	0	2			0	1	2	0.1%
4-5 AM	0	0	0	0	1	1	0	0			0	0	1	0.0%
5-6 AM	0	0	12	9	11	5	14	2			9	4	13	0.7%
6-7 AM	0	0	70	12	66	9	70	15			52	9	61	3.2%
7-8 AM	0	0	175	45	154	49	149	45			120	35	154	8.1%
8-9 AM	0	0	185	70	185	58	197	63			142	48	190	10.0%
9-10 AM	0	0	80	55	70	39	72	58			56	38	94	4.9%
10-11 AM	0	0	59	49	81	55	84	70			56	44	100	5.3%
11-12 PM	0	0	74	53	74	71	73	61			55	46	102	5.4%
12-1 PM	0	0	76	67	88	70	78	82			61	55	115	6.1%
1-2 PM	0	0	72	82	92	80	77	62			60	56	116	6.1%
2-3 PM	0	0	112	107	100	109	86	96			75	78	153	8.0%
3-4 PM	0	0	113	161	125	161	123	145			90	117	207	10.9%
4-5 PM	0	0	110	168	129	177	107	187			87	133	220	11.6%
5-6 PM	0	0	71	104	74	119	77	121			56	86	142	7.5%
6-7 PM	0	0	54	54	40	47	44	58			35	40	74	3.9%
7-8 PM	0	0	30	37	36	34	37	29			26	25	51	2.7%
8-9 PM	0	0	22	17	19	24	22	33			16	19	34	1.8%
9-10 PM	8	12	15	15	13	18	13	23			12	17	29	1.5%
10-11 PM	4	9	10	16	9	8	9	15			8	12	20	1.1%
11-12 AM	7	7	4	4	3	3	2	7			4	5	9	0.5%
LANES	19	28	1351	1130	1383	1143	1344	1181			1024	871	1895	100.0%
TOTAL	47		2481		2526		2525				1900			
	MON		TUE		WED		THURS		FRI		WK AVG			

PEAK HOUR					TOTAL VEHICALS-PEAK PERIODS		2 HOUR PEAK INTERVALS							
MAX. 7 - 9 am PEAK HOUR	190	⇒	10.0%	between	8-9 AM	922	⇒	6 HR TOTAL	2 HR AM (7 - 9 AM)					
MAX. 7 - 11 am PEAK HOUR	190	⇒	10.0%	between	8-9 AM	705	⇒	4 HR TOTAL	VEH / HR	VEH / 2HR	2 HR %			
MAX. 11 am - 1 pm PEAK HOUR	115	⇒	6.1%	between	12-1 PM			2 HR NOON (11 - 1 PM)						
MAX. 11 am - 3 pm PEAK HOUR	153	⇒	8.0%	between	2-3 PM			VEH / HR	VEH / 2HR	2 HR %				
MAX. 4 - 6 pm PEAK HOUR	220	⇒	11.6%	between	4-5 PM			11-12 PM	102	217	11.4%			
MAX. 3 - 6 pm PEAK HOUR	220	⇒	11.6%	between	4-5 PM			12-1 PM	115					
							24 HOUR FACTORS		2 HR PM (4 - 6 PM)					
							2.06	⇒	6-24 HR FACT.	VEH / HR	VEH / 2HR	2 HR %		
							2.69	⇒	4-24 HR FACT.	4-5 PM	220	361	19.1%	
									5-6 PM	142				

Hastings St between Holland Ave and Santa Anita Ave

Westbound

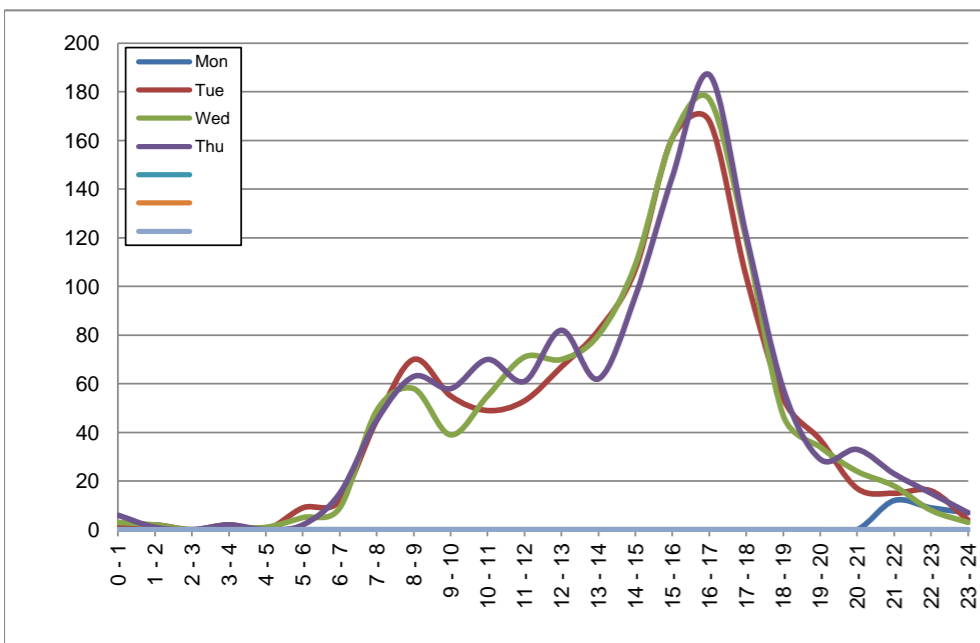
November 23, 2020 to November 26, 2020

Hourly Volumes

Time Period	Mon	Tue	Wed	Thu			
	Nov 23	Nov 24	Nov 25	Nov 26			
0 - 1		1	3	6			
1 - 2		2	2	1			
2 - 3		0	0	0			
3 - 4		2	1	2			
4 - 5		0	1	0			
5 - 6		9	5	2			
6 - 7		12	9	15			
7 - 8		45	49	45			
8 - 9		70	58	63			
9 - 10		55	39	58			
10 - 11		49	55	70			
11 - 12		53	71	61			
12 - 13		67	70	82			
13 - 14		82	80	62			
14 - 15		107	109	96			
15 - 16		161	161	145			
16 - 17		168	177	187			
17 - 18		104	119	121			
18 - 19		54	47	58			
19 - 20		37	34	29			
20 - 21		17	24	33			
21 - 22	12	15	18	23			
22 - 23	9	16	8	15			
23 - 24	7	4	3	7			
Day Total		1130	1143	1181			

15-Minute Volumes

Time Start	Mon	Tue	Wed	Thu				Time Start	Mon	Tue	Wed	Thu			
	Nov 23	Nov 24	Nov 25	Nov 26					Nov 23	Nov 24	Nov 25	Nov 26			
0:00		0	0	4				12:00		17	18	12			
0:15		0	0	0				12:15		14	19	26			
0:30		0	1	1				12:30		19	17	23			
0:45		1	2	1				12:45		17	16	21			
1:00		2	1	1				13:00		19	28	18			
1:15		0	0	0				13:15		22	14	15			
1:30		0	1	0				13:30		20	16	14			
1:45		0	0	0				13:45		21	22	15			
2:00		0	0	0				14:00		16	22	14			
2:15		0	0	0				14:15		20	24	21			
2:30		0	0	0				14:30		27	25	23			
2:45		0	0	0				14:45		44	38	38			
3:00		1	0	0				15:00		41	43	31			
3:15		0	1	0				15:15		37	40	35			
3:30		1	0	1				15:30		37	30	38			
3:45		0	0	1				15:45		46	48	41			
4:00		0	0	0				16:00		33	50	54			
4:15		0	0	0				16:15		44	49	49			
4:30		0	1	0				16:30		51	31	49			
4:45		0	0	0				16:45		40	47	35			
5:00		1	2	0				17:00		37	37	45			
5:15		2	0	1				17:15		28	40	31			
5:30		4	2	1				17:30		27	25	28			
5:45		2	1	0				17:45		12	17	17			
6:00		3	0	1				18:00		11	16	16			
6:15		1	3	4				18:15		19	14	20			
6:30		3	2	2				18:30		15	15	11			
6:45		5	4	8				18:45		9	2	11			
7:00		6	9	10				19:00		10	5	9			
7:15		8	11	9				19:15		13	12	10			
7:30		17	10	8				19:30		5	7	5			
7:45		14	19	18				19:45		9	10	5			
8:00		12	7	13				20:00		3	8	12			
8:15		15	18	16				20:15		7	4	9			
8:30		22	21	21				20:30		5	6	6			
8:45		21	12	13				20:45		2	6	6			
9:00		19	10	21				21:00	3	6	5	4			
9:15		14	18	14				21:15	2	5	6	10			
9:30		13	4	13				21:30	4	2	4	7			
9:45		9	7	10				21:45	3	2	3	2			
10:00		15	10	13				22:00	2	2	2	8			
10:15		14	17	15				22:15	3	3	2	1			
10:30		13	12	18				22:30	3	6	3	6			
10:45		7	16	24				22:45	1	5	1	0			
11:00		8	13	11				23:00	3	0	1	3			
11:15		10	12	16				23:15	3	3	2	1			
11:30		11	20	18				23:30	1	1	0	2			
11:45		24	26	16				23:45	0	0	0	1			



Site notes:

Hastings St between Holland Ave and Santa Anita Ave

Eastbound

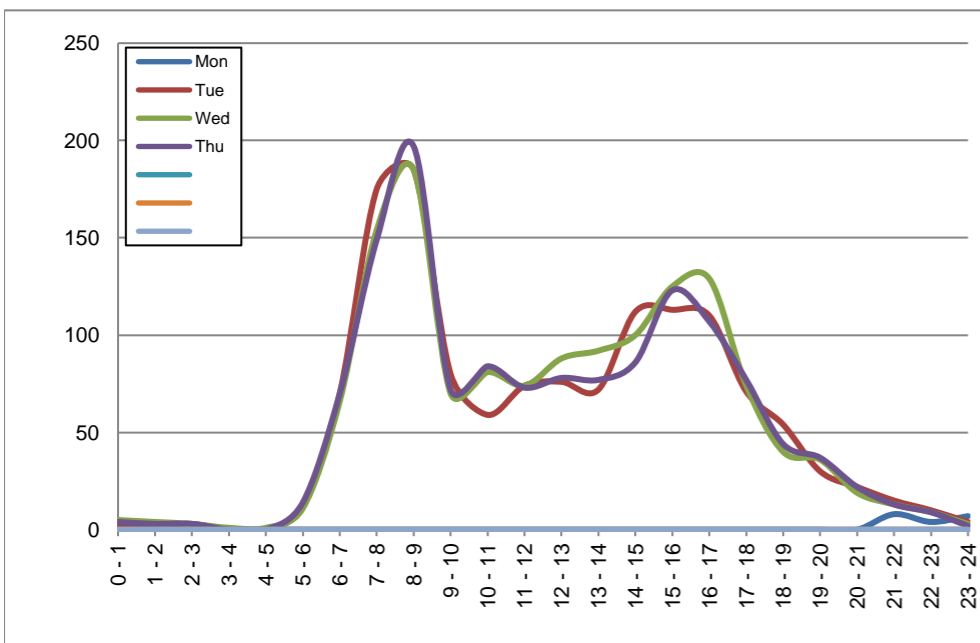
November 23, 2020 to November 26, 2020

Hourly Volumes

Time Period	Mon	Tue	Wed	Thu			
	Nov 23	Nov 24	Nov 25	Nov 26			
0 - 1		2	5	4			
1 - 2		2	4	3			
2 - 3		3	3	3			
3 - 4		0	1	0			
4 - 5		0	1	0			
5 - 6		12	11	14			
6 - 7		70	66	70			
7 - 8		175	154	149			
8 - 9		185	185	197			
9 - 10		80	70	72			
10 - 11		59	81	84			
11 - 12		74	74	73			
12 - 13		76	88	78			
13 - 14		72	92	77			
14 - 15		112	100	86			
15 - 16		113	125	123			
16 - 17		110	129	107			
17 - 18		71	74	77			
18 - 19		54	40	44			
19 - 20		30	36	37			
20 - 21		22	19	22			
21 - 22	8	15	13	13			
22 - 23	4	10	9	9			
23 - 24	7	4	3	2			
Day Total		1351	1383	1344			

15-Minute Volumes

Time Start	Mon	Tue	Wed	Thu				Time Start	Mon	Tue	Wed	Thu			
	Nov 23	Nov 24	Nov 25	Nov 26					Nov 23	Nov 24	Nov 25	Nov 26			
0:00		1	1	2				12:00		18	28	18			
0:15		1	3	1				12:15		20	14	19			
0:30		0	0	0				12:30		19	20	21			
0:45		0	1	1				12:45		19	26	20			
1:00		1	1	2				13:00		22	22	23			
1:15		0	2	0				13:15		12	25	14			
1:30		1	1	0				13:30		21	17	17			
1:45		0	0	1				13:45		17	28	23			
2:00		0	0	1				14:00		22	22	22			
2:15		0	1	0				14:15		34	20	19			
2:30		1	1	1				14:30		29	29	19			
2:45		2	1	1				14:45		27	29	26			
3:00		0	0	0				15:00		15	31	22			
3:15		0	0	0				15:15		28	23	32			
3:30		0	1	0				15:30		31	32	33			
3:45		0	0	0				15:45		39	39	36			
4:00		0	0	0				16:00		40	30	27			
4:15		0	0	0				16:15		19	40	25			
4:30		0	1	0				16:30		30	29	27			
4:45		0	0	0				16:45		21	30	28			
5:00		1	1	2				17:00		16	27	19			
5:15		3	1	1				17:15		21	13	18			
5:30		2	1	2				17:30		16	22	16			
5:45		6	8	9				17:45		18	12	24			
6:00		13	8	8				18:00		19	11	17			
6:15		15	15	17				18:15		10	14	5			
6:30		15	19	20				18:30		12	13	15			
6:45		27	24	25				18:45		13	2	7			
7:00		28	19	21				19:00		10	10	6			
7:15		52	46	41				19:15		10	4	12			
7:30		47	44	46				19:30		5	15	9			
7:45		48	45	41				19:45		5	7	10			
8:00		56	50	56				20:00		6	4	8			
8:15		52	60	57				20:15		5	6	3			
8:30		43	49	54				20:30		6	7	6			
8:45		34	26	30				20:45		5	2	5			
9:00		16	24	22				21:00	2	2	4	1			
9:15		19	13	14				21:15	3	7	2	5			
9:30		22	18	19				21:30	0	0	4	2			
9:45		23	15	17				21:45	3	6	3	5			
10:00		22	21	21				22:00	1	1	1	2			
10:15		13	19	25				22:15	1	5	4	2			
10:30		8	18	18				22:30	2	2	2	5			
10:45		16	23	20				22:45	0	2	2	0			
11:00		15	16	15				23:00	4	0	1	0			
11:15		19	20	15				23:15	2	1	2	1			
11:30		17	15	18				23:30	1	2	0	0			
11:45		23	23	25				23:45	0	1	0	1			



Site notes:

Vehicle Speed Summary

Saanich Engineering Department

Count Id: C0032-01

Filename: Hastings St between Holland Ave and Santa Anita Ave-Nov-2020.xlsm

Location: Hastings St between Holland Ave and Santa Anita Ave

Note:

Direction: **East-West**

Dates: **November 23, 2020 To November 27, 2020**

Filtered data

AVG. SPEED	25 mph	40 km/h
50 % SPEED	25 mph	40 km/h
85 % SPEED	30 mph	49 km/h
95 % SPEED	33 mph	54 km/h

Location Map



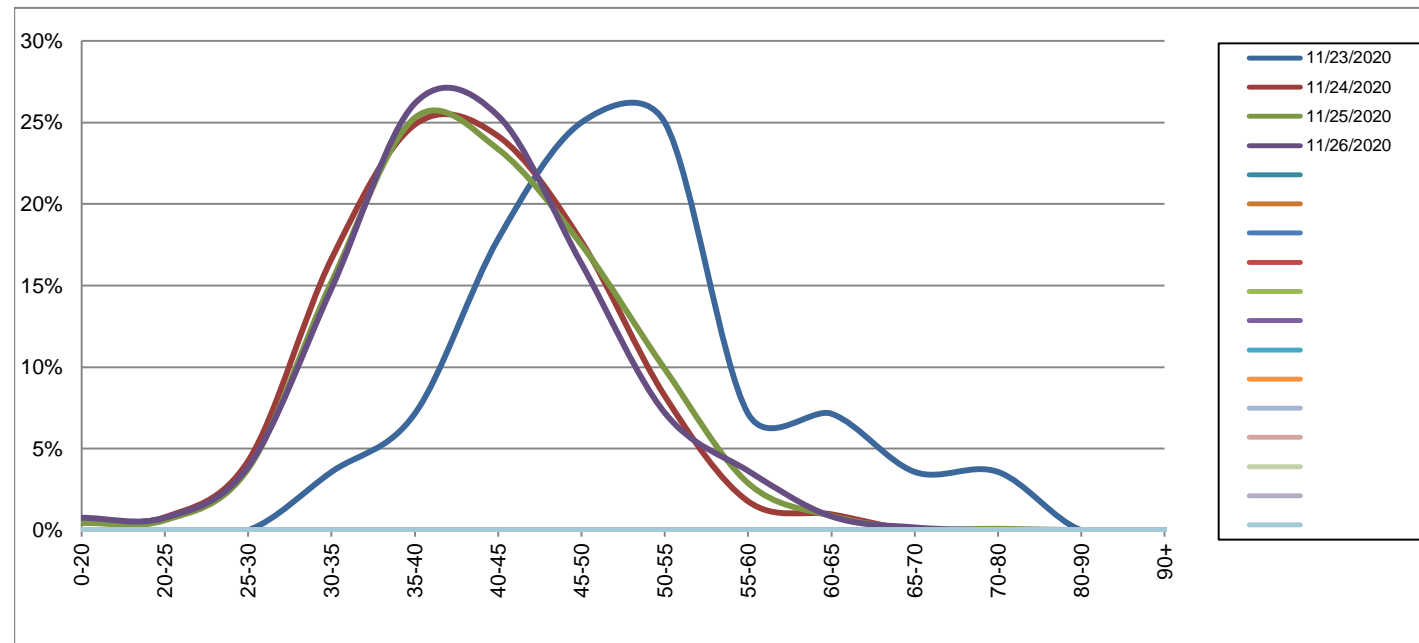
Hastings St between Holland Ave and Santa Anita Ave

Westbound
November 23, 2020 to November 26, 2020

Daily Speed Bin Percentages															Daily Speed Bin Volumes														Total	Avg. Speed
Bin #	1	2	3	4	5	6	7	8	9	10	11	12	13	14	1	2	3	4	5	6	7	8	9	10	11	12	13	14		
Bin Speeds	0-20	20-25	25-30	30-35	35-40	40-45	45-50	50-55	55-60	60-65	65-70	70-80	80-90	90+	0-20	20-25	25-30	30-35	35-40	40-45	45-50	50-55	55-60	60-65	65-70	70-80	80-90	90+	Volume	Speed
11/23/2020	0.0%	0.0%	0.0%	3.6%	7.1%	17.9%	25.0%	25.0%	7.1%	7.1%	3.6%	3.6%	0.0%	0.0%	0	0	0	1	2	5	7	7	2	2	1	1	0	0	28	50
11/24/2020	0.6%	0.8%	4.2%	16.6%	24.9%	24.2%	17.7%	8.2%	1.8%	1.0%	0.0%	0.0%	0.0%	0.0%	7	9	48	188	281	273	200	93	20	11	0	0	0	0	1130	41
11/25/2020	0.4%	0.6%	3.8%	15.2%	25.3%	23.4%	17.5%	9.9%	2.9%	0.9%	0.1%	0.1%	0.0%	0.0%	5	7	43	174	289	267	200	113	33	10	1	1	0	0	1143	41
11/26/2020	0.8%	0.8%	3.9%	14.8%	26.2%	25.4%	16.3%	7.2%	3.6%	0.8%	0.2%	0.0%	0.0%	0.0%	9	9	46	175	309	300	193	85	43	10	2	0	0	0	1181	41
Total	0.6%	0.7%	3.9%	15.5%	25.3%	24.3%	17.2%	8.6%	2.8%	0.9%	0.1%	0.1%	0.0%	0.0%	21	25	137	538	881	845	600	298	98	33	4	2	0	0	3482	41

Speed Data Summary

Bin #	1	2	3	4	5	6	7	8	9	10	11	12	13	14	Total
Bin Speeds	0-20	20-25	25-30	30-35	35-40	40-45	45-50	50-55	55-60	60-65	65-70	70-80	80-90	90+	
Survey Total	21	25	137	538	881	845	600	298	98	33	4	2	0	0	3482
% Total	0.6%	0.7%	3.9%	15.5%	25.3%	24.3%	17.2%	8.6%	2.8%	0.9%	0.1%	0.1%	0.0%	0.0%	100%
Accumulated %	0.6%	1.3%	5.3%	20.7%	46.0%	70.3%	87.5%	96.1%	98.9%	99.8%	99.9%	100.0%	100.0%	100%	
Inverse Accum. %	99.4%	98.7%	94.7%	79.3%	54.0%	29.7%	12.5%	3.9%	1.1%	0.2%	0.1%	0.0%	0.0%	0.0%	
Average Speed	41 KM/H														



Site notes:

Hastings St between Holland Ave and Santa Anita Ave

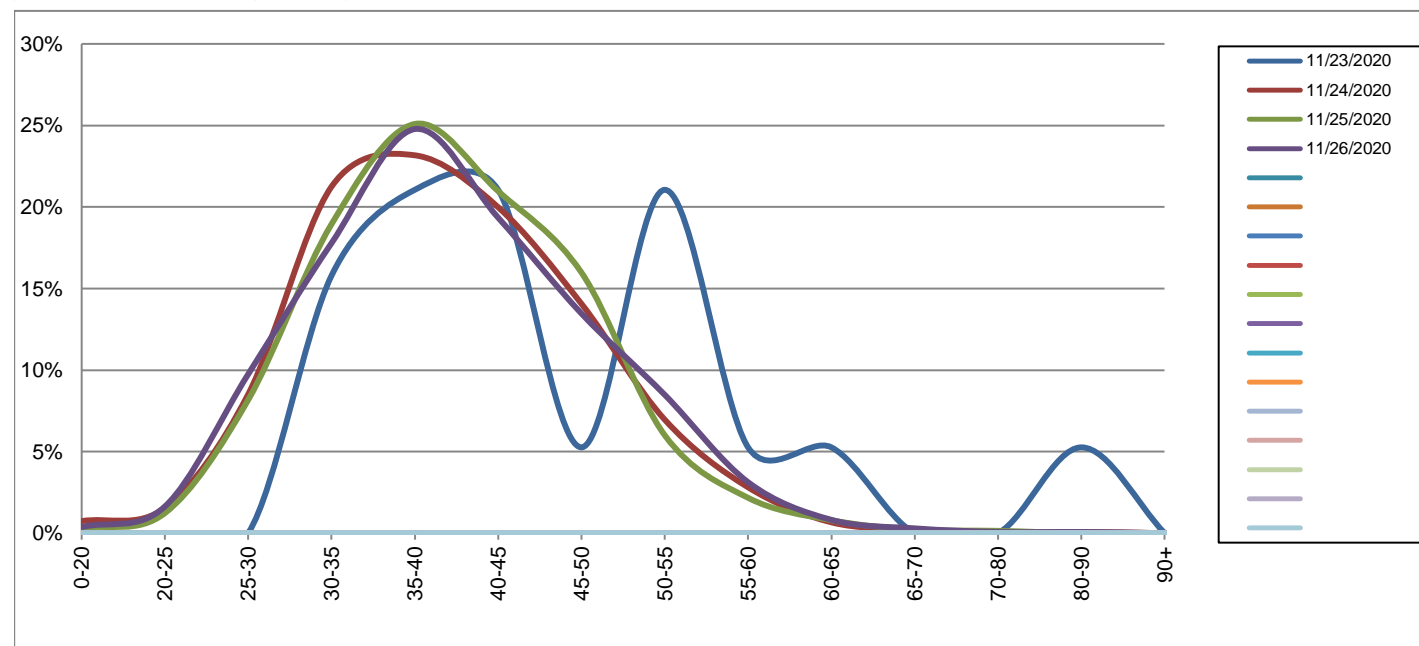
Eastbound

November 23, 2020 to November 26, 2020

Daily Speed Bin Percentages															Daily Speed Bin Volumes														Total	Avg.
Bin #	1	2	3	4	5	6	7	8	9	10	11	12	13	14	1	2	3	4	5	6	7	8	9	10	11	12	13	14	Volume	Speed
Bin Speeds	0-20	20-25	25-30	30-35	35-40	40-45	45-50	50-55	55-60	60-65	65-70	70-80	80-90	90+	0-20	20-25	25-30	30-35	35-40	40-45	45-50	50-55	55-60	60-65	65-70	70-80	80-90	90+		
11/23/2020	0.0%	0.0%	0.0%	15.8%	21.1%	21.1%	5.3%	21.1%	5.3%	5.3%	0.0%	0.0%	5.3%	0.0%	0	0	0	3	4	4	1	4	1	1	0	0	1	0	19	46
11/24/2020	0.7%	1.6%	8.5%	21.2%	23.2%	20.0%	14.1%	7.0%	2.8%	0.7%	0.2%	0.0%	0.1%	0.0%	10	21	115	287	313	270	190	94	38	9	3	0	1	0	1351	39
11/25/2020	0.3%	1.2%	8.2%	18.9%	25.1%	21.0%	16.0%	6.0%	2.2%	0.8%	0.2%	0.1%	0.0%	0.0%	4	17	113	262	347	290	221	83	30	11	3	2	0	0	1383	40
11/26/2020	0.4%	1.6%	9.7%	17.8%	24.8%	19.3%	13.5%	8.5%	3.1%	0.8%	0.3%	0.1%	0.1%	0.0%	5	22	131	239	333	260	181	114	42	11	4	1	1	0	1344	40
Total	0.5%	1.5%	8.8%	19.3%	24.3%	20.1%	14.5%	7.2%	2.7%	0.8%	0.2%	0.1%	0.1%	0.0%	19	60	359	791	997	824	593	295	111	32	10	3	3	0	4097	40

Speed Data Summary

Bin #	1	2	3	4	5	6	7	8	9	10	11	12	13	14	Total
Bin Speeds	0-20	20-25	25-30	30-35	35-40	40-45	45-50	50-55	55-60	60-65	65-70	70-80	80-90	90+	
Survey Total	19	60	359	791	997	824	593	295	111	32	10	3	3	0	4097
% Total	0.5%	1.5%	8.8%	19.3%	24.3%	20.1%	14.5%	7.2%	2.7%	0.8%	0.2%	0.1%	0.1%	0.0%	100%
Accumulated %	0.5%	1.9%	10.7%	30.0%	54.3%	74.4%	88.9%	96.1%	98.8%	99.6%	99.9%	99.9%	100.0%	100%	
Inverse Accum. %	99.5%	98.1%	89.3%	70.0%	45.7%	25.6%	11.1%	3.9%	1.2%	0.4%	0.1%	0.1%	0.0%	0.0%	
Average Speed	40 KM/H														



Site notes:

Hastings St between Holland Ave and Santa Anita Ave

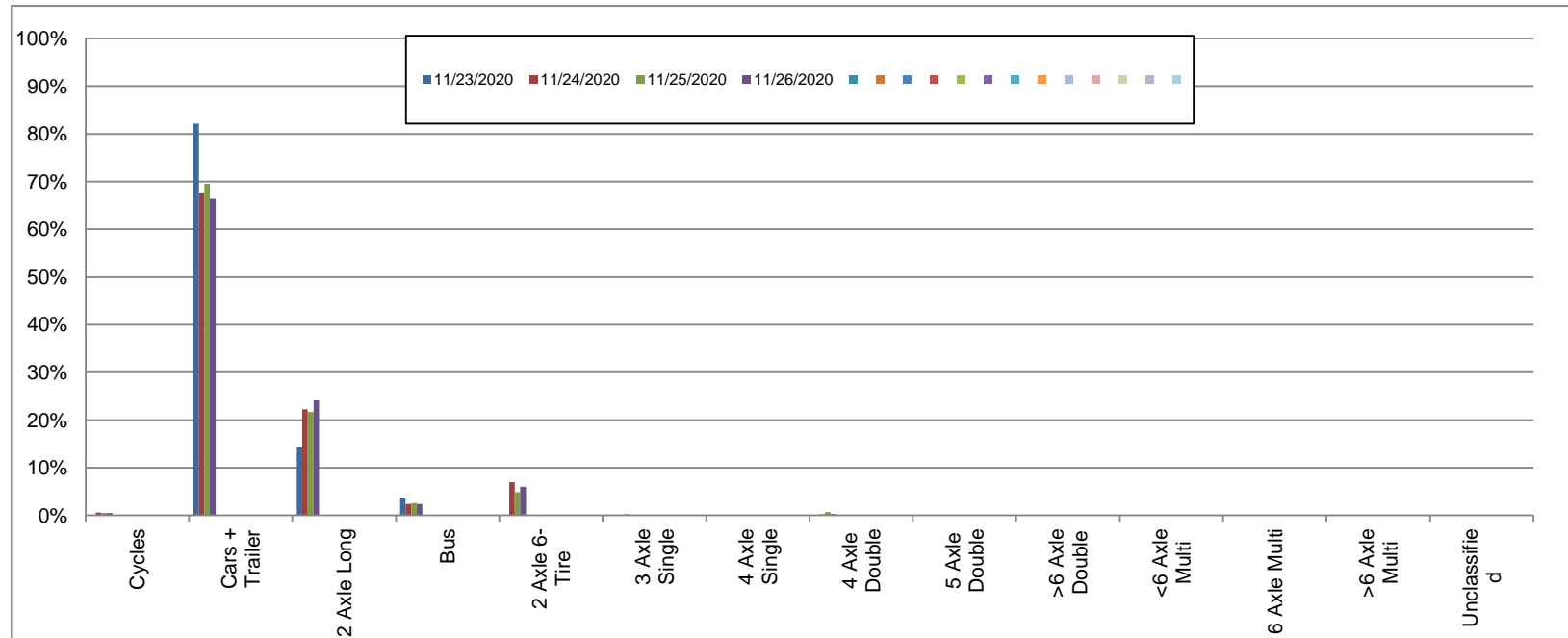
Westbound

November 23, 2020 to November 26, 2020

Daily Class Bin Percentages															Daily Class Bin Volumes														
Bin #	1	2	3	4	5	6	7	8	9	10	11	12	13	14	1	2	3	4	5	6	7	8	9	10	11	12	13	14	Total Volume
Bin Class	Cycles	Cars + Trailer	2 Axle Long	Bus	2 Axle 6-Tire	3 Axle Single	4 Axle Single	4 Axle Double	5 Axle Double	>6 Axle Double	<6 Axle Multi	6 Axle Multi	>6 Axle Multi	Unclassified	Cycles	Cars + Trailer	2 Axle Long	Bus	2 Axle 6-Tire	3 Axle Single	4 Axle Single	4 Axle Double	5 Axle Double	>6 Axle Double	<6 Axle Multi	6 Axle Multi	>6 Axle Multi	Unclassified	
11/23/2020	0.0%	82.1%	14.3%	3.6%	0.0%	0.0%	0.0%	0.0%	0.0%	0.0%	0.0%	0.0%	0.0%	0.0%	0	23	4	1	0	0	0	0	0	0	0	0	0	0	28
11/24/2020	0.6%	67.5%	22.2%	2.4%	6.9%	0.0%	0.0%	0.2%	0.1%	0.0%	0.0%	0.0%	0.0%	0.1%	7	763	251	27	78	0	0	2	1	0	0	0	0	1	1130
11/25/2020	0.5%	69.6%	21.7%	2.5%	4.9%	0.0%	0.0%	0.7%	0.0%	0.0%	0.0%	0.0%	0.0%	0.1%	6	795	248	29	56	0	0	8	0	0	0	0	0	1	1143
11/26/2020	0.5%	66.4%	24.1%	2.4%	6.0%	0.2%	0.0%	0.3%	0.0%	0.0%	0.0%	0.0%	0.0%	0.1%	6	784	285	28	71	2	0	4	0	0	0	0	0	1	1181
Total	0.5%	67.9%	22.6%	2.4%	5.9%	0.1%	0.0%	0.4%	0.0%	0.0%	0.0%	0.0%	0.0%	0.1%	19	2365	788	85	205	2	0	14	1	0	0	0	0	3	3482

Class Data Summary

Bin #	1	2	3	4	5	6	7	8	9	10	11	12	13	14	Total Volume
Bin Class	Cycles	Cars + Trailer	2 Axle Long	Bus	2 Axle 6-Tire	3 Axle Single	4 Axle Single	4 Axle Double	5 Axle Double	>6 Axle Double	<6 Axle Multi	6 Axle Multi	>6 Axle Multi	Unclassified	Total Volume
Survey Total	19	2365	788	85	205	2	0	14	1	0	0	0	0	3	3482
% Total	0.5%	67.9%	22.6%	2.4%	5.9%	0.1%	0.0%	0.4%	0.0%	0.0%	0.0%	0.0%	0.0%	0.1%	100%
Accumulated %	0.5%	68.5%	91.1%	93.5%	99.4%	99.5%	99.5%	99.9%	99.9%	99.9%	99.9%	99.9%	99.9%	100.0%	
Inv. Accum. %	99.5%	31.5%	8.9%	6.5%	0.6%	0.5%	0.5%	0.1%	0.1%	0.1%	0.1%	0.1%	0.1%	0.0%	



Classification Descriptions

Bin #	Bin Description
1	Motorcycles
2	Passenger cars, including those with recreational trailers
3	2-axle pick-ups, vans, and RVs, including those with recreational trailers
4	Buses
5	2-axle, 6-tire single units
6	3-axle single units
7	4-axle single units
8	3-axle or 4-axle double unit
9	5-axle double unit
10	6-, 7-, or 8-axle double unit
11	5-axle multiple unit
12	6-axle multiple unit
13	7-or-more-axle multiple unit
14	Vehicles that could not be classified

Site notes:

Hastings St between Holland Ave and Santa Anita Ave

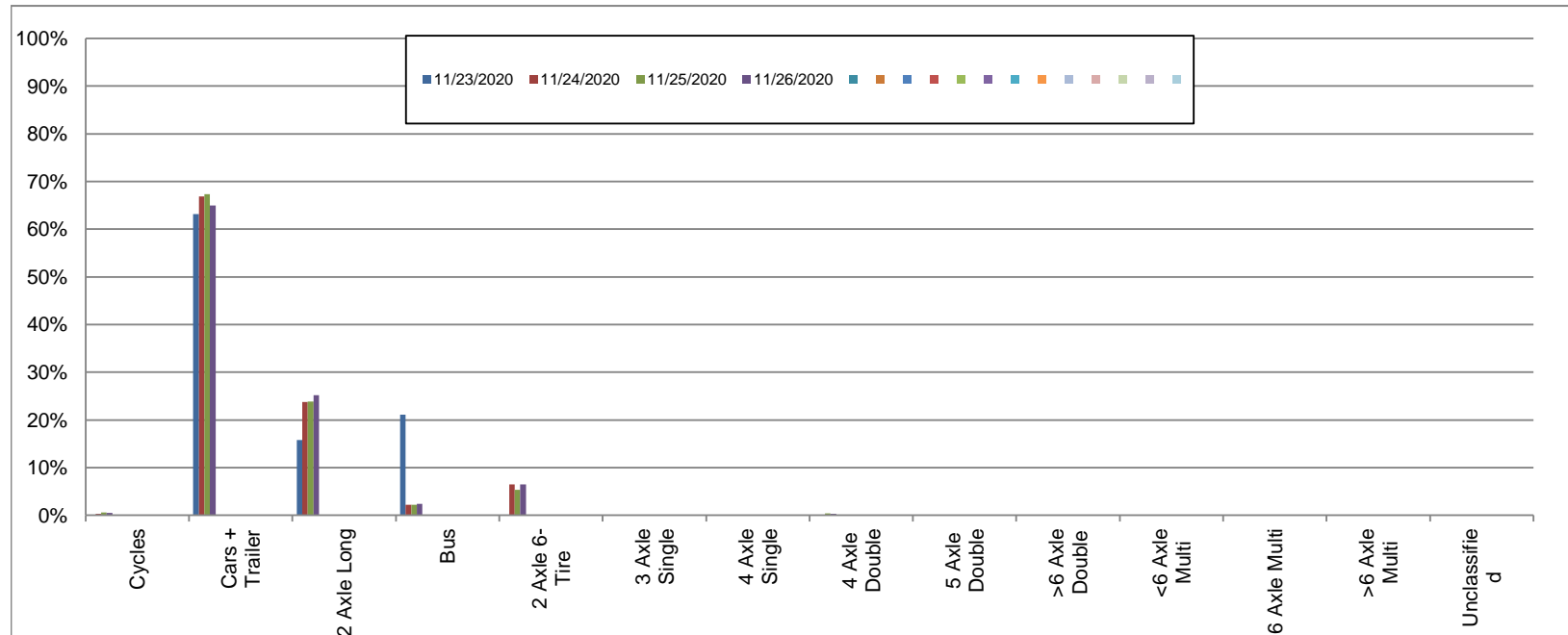
Eastbound

November 23, 2020 to November 26, 2020

Daily Class Bin Percentages															Daily Class Bin Volumes															
Bin #	1	2	3	4	5	6	7	8	9	10	11	12	13	14	1	2	3	4	5	6	7	8	9	10	11	12	13	14	Total Volume	
Bin Class	Cycles	Cars + Trailer	2 Axle Long	Bus	2 Axle 6-Tire	3 Axle Single	4 Axle Single	4 Axle Double	5 Axle Double	>6 Axle Double	<6 Axle Multi	6 Axle Multi	>6 Axle Multi	Unclassified	Cycles	Cars + Trailer	2 Axle Long	Bus	2 Axle 6-Tire	3 Axle Single	4 Axle Single	4 Axle Double	5 Axle Double	>6 Axle Double	<6 Axle Multi	6 Axle Multi	>6 Axle Multi	Unclassified	Total Volume	
11/23/2020	0.0%	63.2%	15.8%	21.1%	0.0%	0.0%	0.0%	0.0%	0.0%	0.0%	0.0%	0.0%	0.0%	0.0%	0	12	3	4	0	0	0	0	0	0	0	0	0	0	19	
11/24/2020	0.3%	66.9%	23.8%	2.2%	6.4%	0.1%	0.0%	0.1%	0.0%	0.0%	0.0%	0.0%	0.0%	0.1%	4	904	321	30	87	2	0	2	0	0	0	0	0	0	1	1351
11/25/2020	0.6%	67.4%	23.9%	2.2%	5.4%	0.1%	0.0%	0.4%	0.1%	0.0%	0.0%	0.0%	0.0%	0.1%	8	932	330	30	74	1	0	5	1	0	0	0	0	0	2	1383
11/26/2020	0.4%	65.0%	25.1%	2.4%	6.5%	0.1%	0.0%	0.3%	0.0%	0.0%	0.0%	0.0%	0.0%	0.1%	6	873	338	32	87	2	0	4	0	0	0	0	0	0	2	1344
Total	0.4%	66.4%	24.2%	2.3%	6.1%	0.1%	0.0%	0.3%	0.0%	0.0%	0.0%	0.0%	0.0%	0.1%	18	2721	992	96	248	5	0	11	1	0	0	0	0	5	4097	

Class Data Summary

Bin #	1	2	3	4	5	6	7	8	9	10	11	12	13	14	Total Volume
Bin Class	Cycles	Cars + Trailer	2 Axle Long	Bus	2 Axle 6-Tire	3 Axle Single	4 Axle Single	4 Axle Double	5 Axle Double	>6 Axle Double	<6 Axle Multi	6 Axle Multi	>6 Axle Multi	Unclassified	Total Volume
Survey Total	18	2721	992	96	248	5	0	11	1	0	0	0	0	5	4097
% Total	0.4%	66.4%	24.2%	2.3%	6.1%	0.1%	0.0%	0.3%	0.0%	0.0%	0.0%	0.0%	0.0%	0.1%	100%
Accumulated %	0.4%	66.9%	91.1%	93.4%	99.5%	99.6%	99.6%	99.9%	99.9%	99.9%	99.9%	99.9%	99.9%	100.0%	
Inv. Accum. %	99.6%	33.1%	8.9%	6.6%	0.5%	0.4%	0.4%	0.1%	0.1%	0.1%	0.1%	0.1%	0.1%	0.0%	



Classification Descriptions

Bin #	Bin Description
1	Motorcycles
2	Passenger cars, including those with recreational trailers
3	2-axle pick-ups, vans, and RVs, including those with recreational trailers
4	Buses
5	2-axle, 6-tire single units
6	3-axle single units
7	4-axle single units
8	3-axle or 4-axle double unit
9	5-axle double unit
10	6-, 7-, or 8-axle double unit
11	5-axle multiple unit
12	6-axle multiple unit
13	7-or-more-axle multiple unit
14	Vehicles that could not be classified

Site notes: